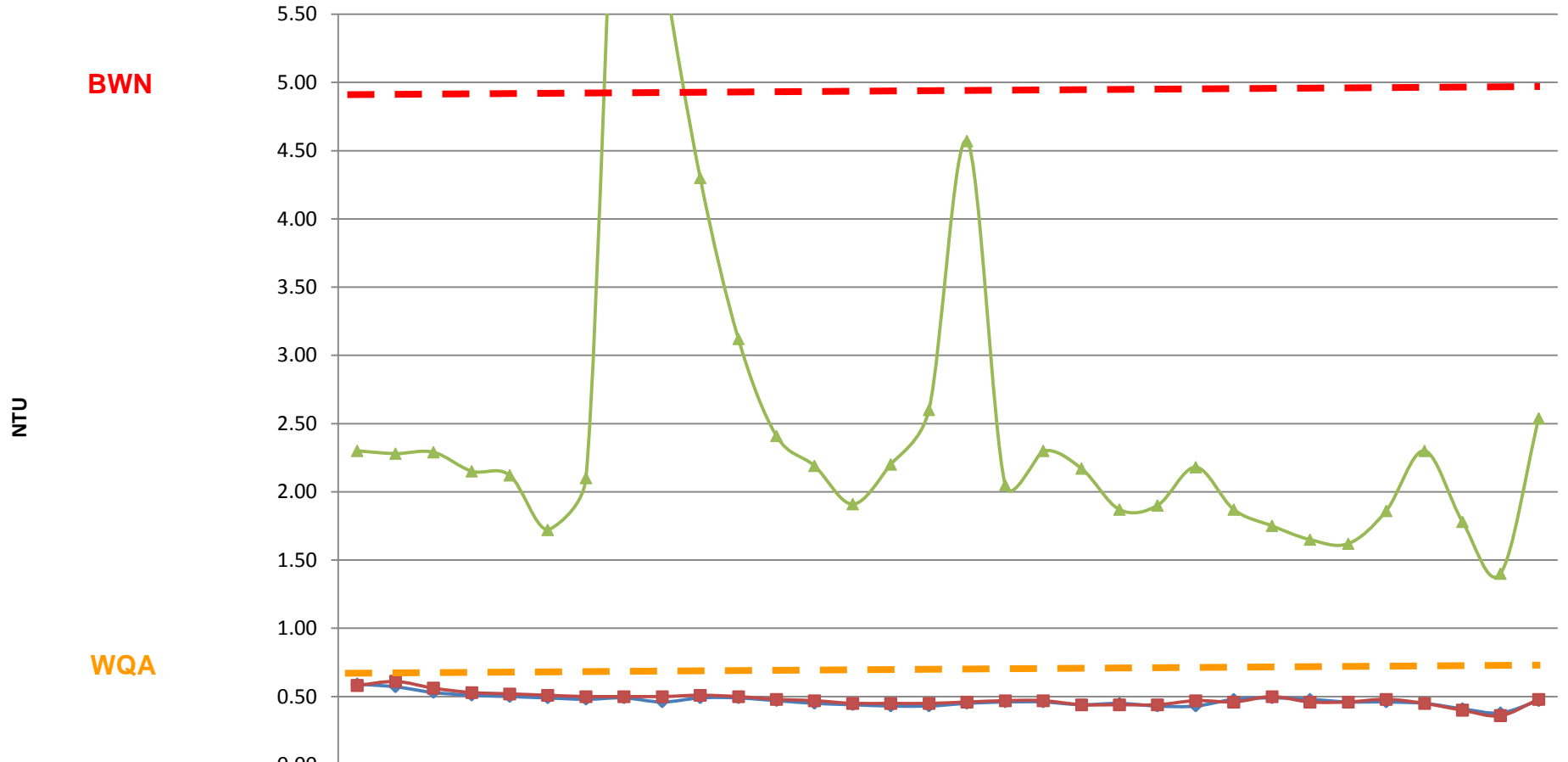


Black Mountain Irrigation District Turbidity Monitoring

BMID Turbidity August 2007

(Single Point Daily Sampling with Inline Hach 1720c)



	1	2	3	4	5	6	7	8	9	10	11	12	13	14	15	16	17	18	19	20	21	22	23	24	25	26	27	28	29	30	31	Avg		
◆ Intake at Screen Works	0.5	0.5	0.5	0.5	0.5	0.4	0.4	0.4	0.4	0.4	0.4	0.4	0.4	0.4	0.4	0.4	0.4	0.4	0.4	0.4	0.4	0.4	0.4	0.4	0.4	0.4	0.4	0.4	0.4	0.4	0.4	0.3	0.4	
■ Booster#1 - First Point of Use	0.5	0.6	0.5	0.5	0.5	0.5	0.5	0.5	0.5	0.5	0.5	0.4	0.4	0.4	0.4	0.4	0.4	0.4	0.4	0.4	0.4	0.4	0.4	0.4	0.4	0.5	0.4	0.4	0.4	0.4	0.4	0.4	0.3	0.4
▲ Scotty Creek - Chlorination Station	2.3	2.2	2.2	2.1	2.1	1.7	2.1	7.8	5.9	4.3	3.1	2.4	2.1	1.9	2.2	2.6	4.5	2.0	2.3	2.1	1.8	1.9	2.1	1.8	1.7	1.6	1.6	1.8	2.3	1.7	1.4	2.5		

Date