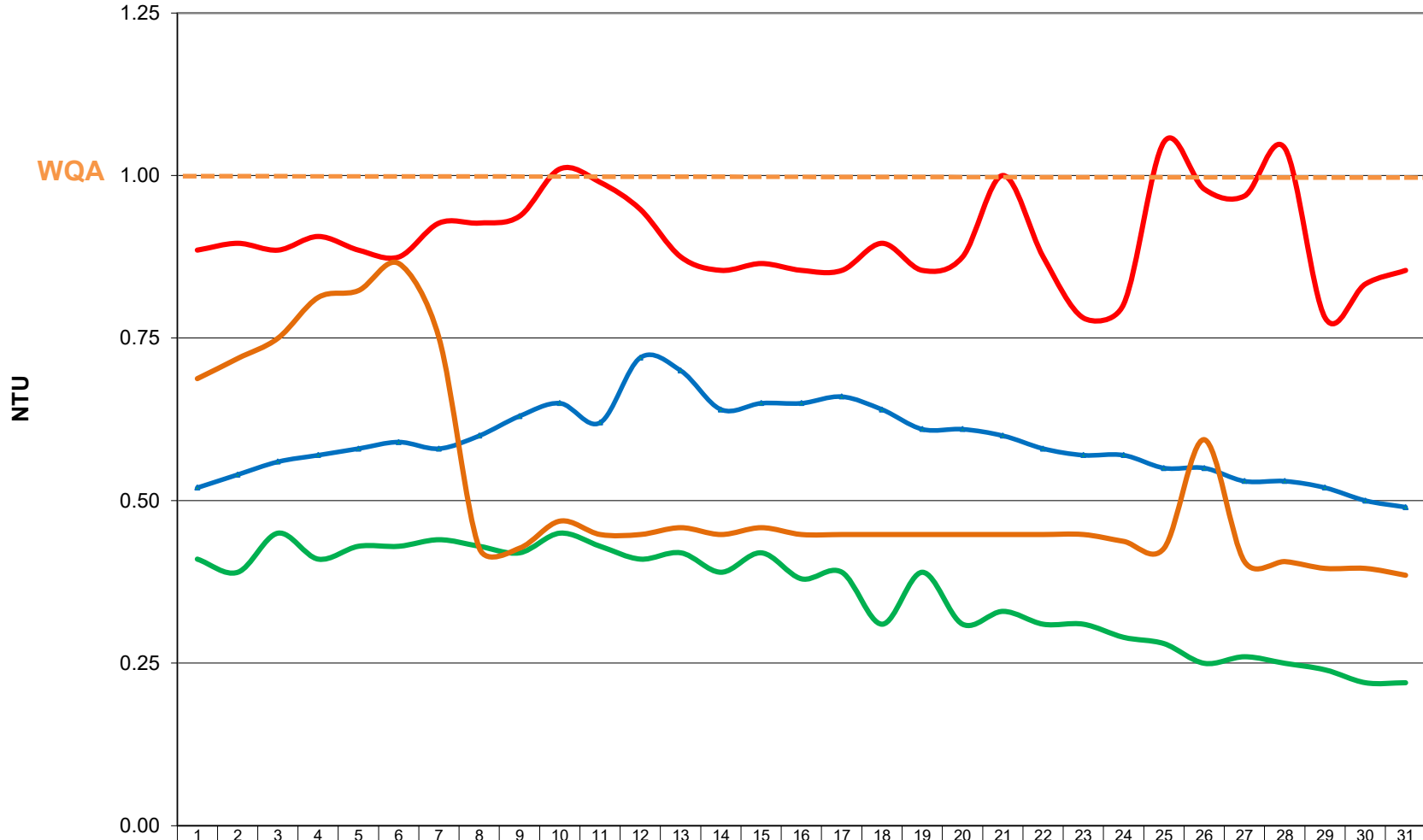


# BMID Turbidity October 2022

Single Point Daily Sampling with Inline Hach 1720c)



	1	2	3	4	5	6	7	8	9	10	11	12	13	14	15	16	17	18	19	20	21	22	23	24	25	26	27	28	29	30	31
— Distribution Intake Booster#1-First User	0.52	0.54	0.56	0.57	0.58	0.59	0.58	0.60	0.63	0.65	0.62	0.72	0.70	0.64	0.65	0.65	0.66	0.64	0.61	0.61	0.60	0.58	0.57	0.57	0.55	0.55	0.53	0.53	0.52	0.50	0.49
— Booster#1- First User	0.41	0.39	0.45	0.41	0.43	0.43	0.44	0.43	0.42	0.45	0.43	0.41	0.42	0.39	0.42	0.38	0.39	0.31	0.39	0.31	0.33	0.31	0.31	0.29	0.28	0.25	0.26	0.25	0.24	0.22	0.22
— Mission Creek Intake	0.85	0.86	0.85	0.87	0.85	0.84	0.89	0.89	0.90	0.97	0.95	0.91	0.84	0.82	0.83	0.82	0.82	0.86	0.82	0.84	0.96	0.84	0.75	0.77	1.01	0.94	0.93	1.00	0.75	0.80	0.82
— UV Plant	0.66	0.69	0.72	0.78	0.79	0.83	0.72	0.41	0.41	0.45	0.43	0.43	0.44	0.43	0.44	0.43	0.43	0.43	0.43	0.43	0.43	0.43	0.43	0.42	0.41	0.57	0.39	0.39	0.38	0.38	0.37

**Date**