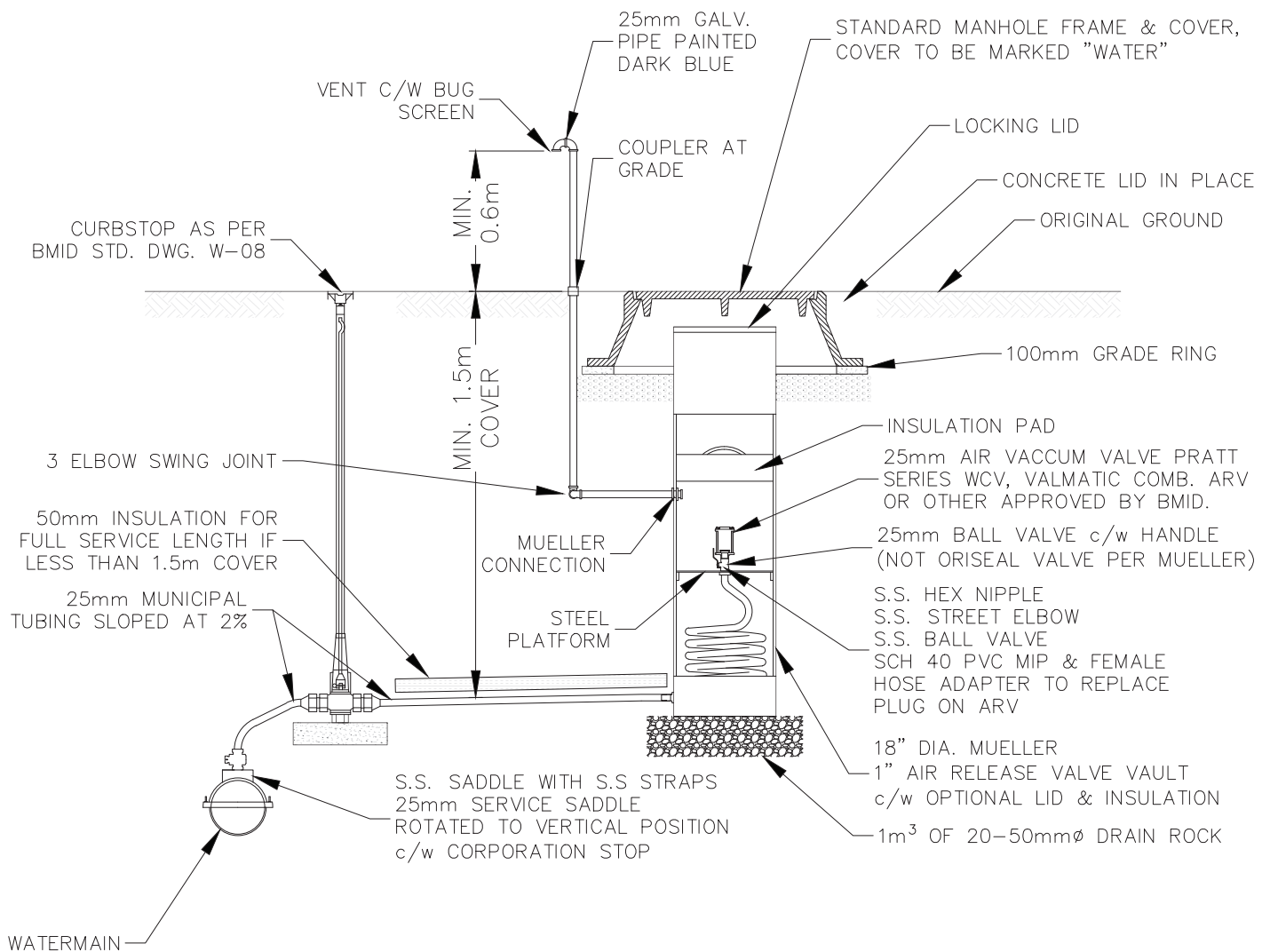


# STANDARD DETAIL DRAWINGS



## NOTES:

1. CONTRACTOR TO ENSURE ALL PIPING FROM CORPORATION STOP TO AIR VALVE IS INSTALLED WITH POSITIVE GRADE, INCLUDING COIL TUBING INSIDE AIR RELEASE VAULT.
2. CONTRACTOR TO ENSURE STEEL PLATFORM FOR AIR VALVE CAN BE PULLED UP & OUT OF AIR RELEASE VAULT.
3. MANHOLE FRAME AND COVER ONLY REQUIRED WHEN ARV LOCATED IN AREAS SUBJECT TO VEHICULAR TRAFFIC. USE LOCKING VAULT LID IN ALL OTHER CASES.
4. NO CAMBRIDGE CURB STOPS

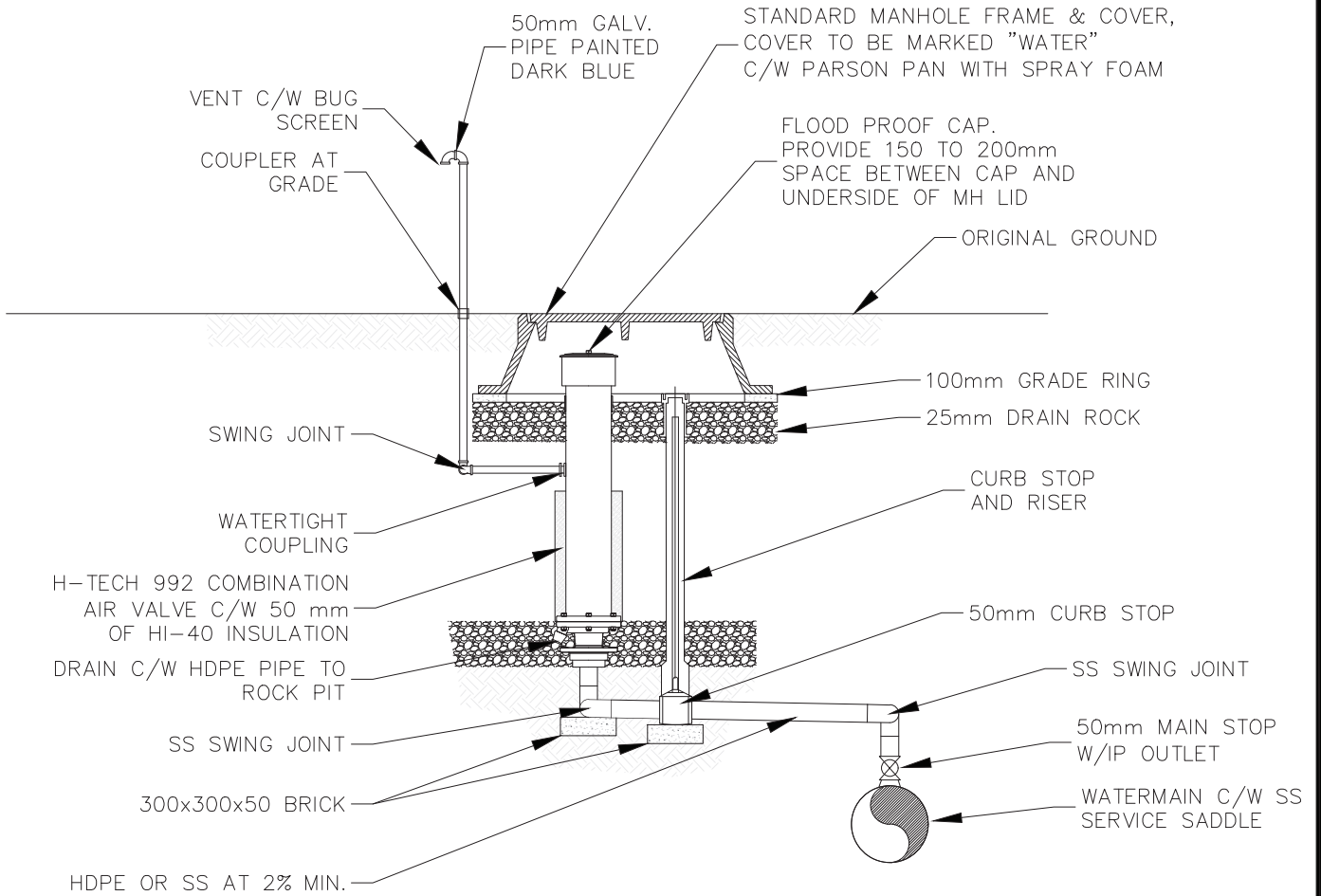


25mm AIR VALVE  
ASSEMBLY

DRAWING NUMBER

W-01

# STANDARD DETAIL DRAWINGS



**NOTES:**

1. NO CAMBRIDGE CURB STOPS

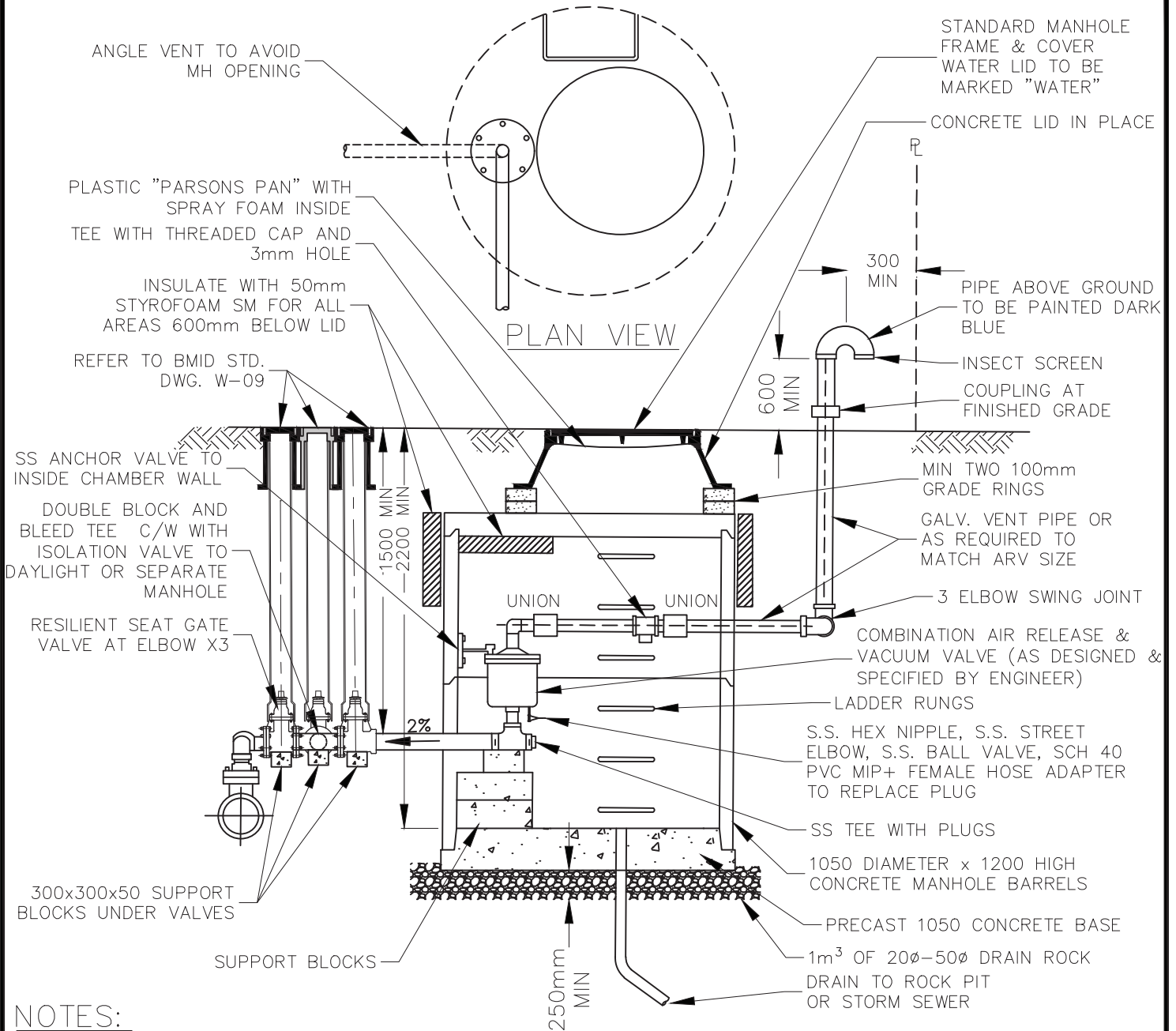


50mm AIR VALVE ASSEMBLY

DRAWING NUMBER

W-02

# STANDARD DETAIL DRAWINGS



## NOTES:

1. AIR VALVE ASSEMBLY IS FOR 75mm AIR VALVES OR LARGER
2. LOCATE AIR VALVE AWAY FROM TRAFFIC (i.e. BOULEVARD)
3. LOCATE VENT PIPE AWAY FROM LADDER RUNGS
4. ABOVE GROUND INSTALLATIONS (SUCH AS "HOT BOXES") MAY BE REQUIRED BY THE UTILITY
5. ALL DIMENSIONS IN mm UNLESS NOTED OTHERWISE
6. ALL METALLIC COMPONENTS IN THE GROUND TO BE PROTECTED WITH DENSO PASTE AND TAPE

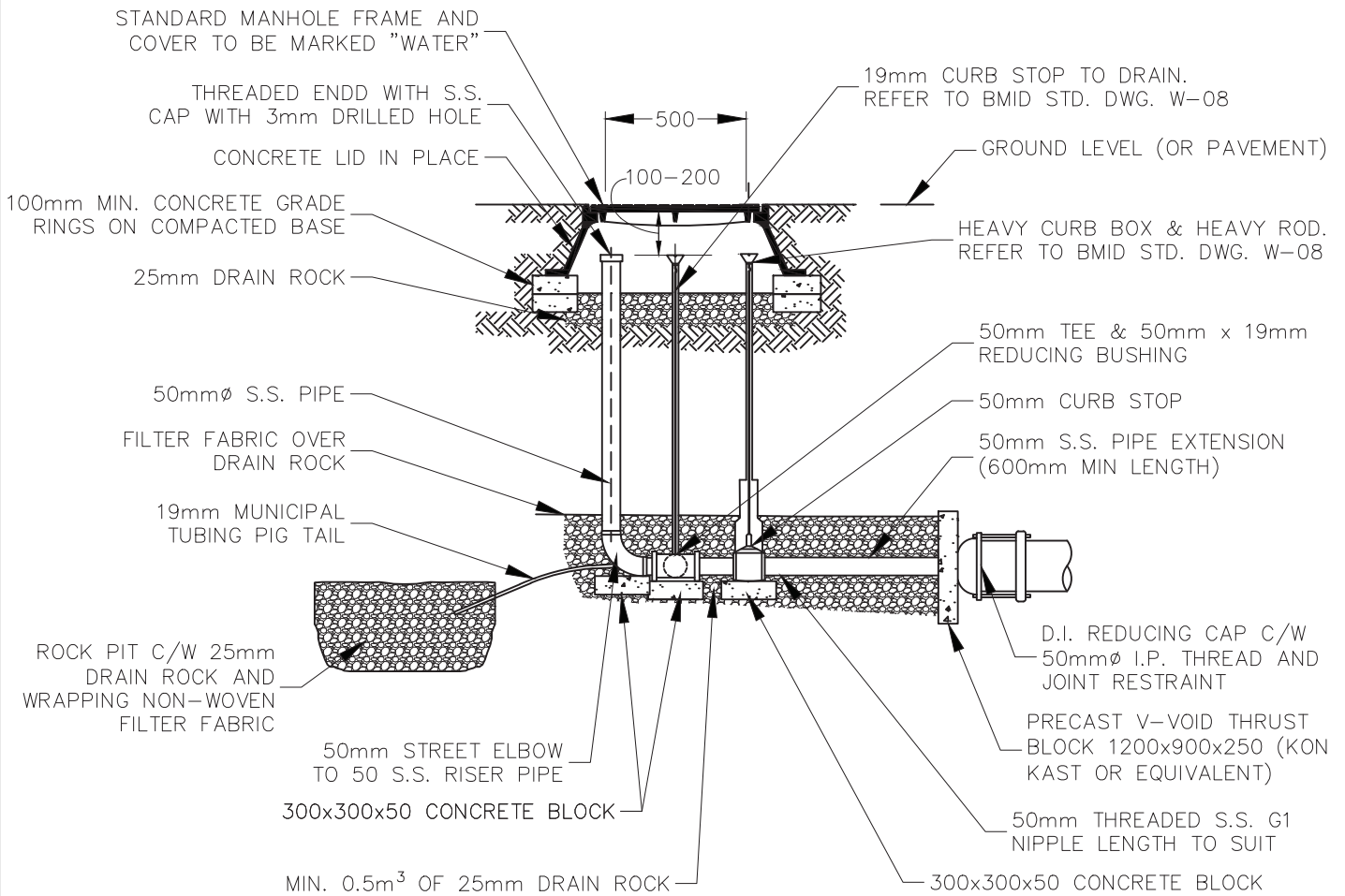


75mm AND LARGER  
AIR VALVE ASSEMBLY

DRAWING NUMBER

W-03

# STANDARD DETAIL DRAWINGS



## NOTES:

1. SIZE BLOW-OFF ASSEMBLY TO ACHIEVE SPECIFIED MAIN FLUSHING VELOCITY
2. ENTIRE ASSEMBLY TO BE PRESSURE TESTED
3. FOR ALL BOLTS AND JOINT RESTRAINERS USE DENSO PASTE AND TAPE
4. ALL DIMENSIONS IN MM UNLESS OTHERWISE NOTED
5. NO CAMBRIDGE CURB STOPS



50mm BLOW-OFF  
(FOR MAINS 100mm & SMALLER)

DRAWING NUMBER

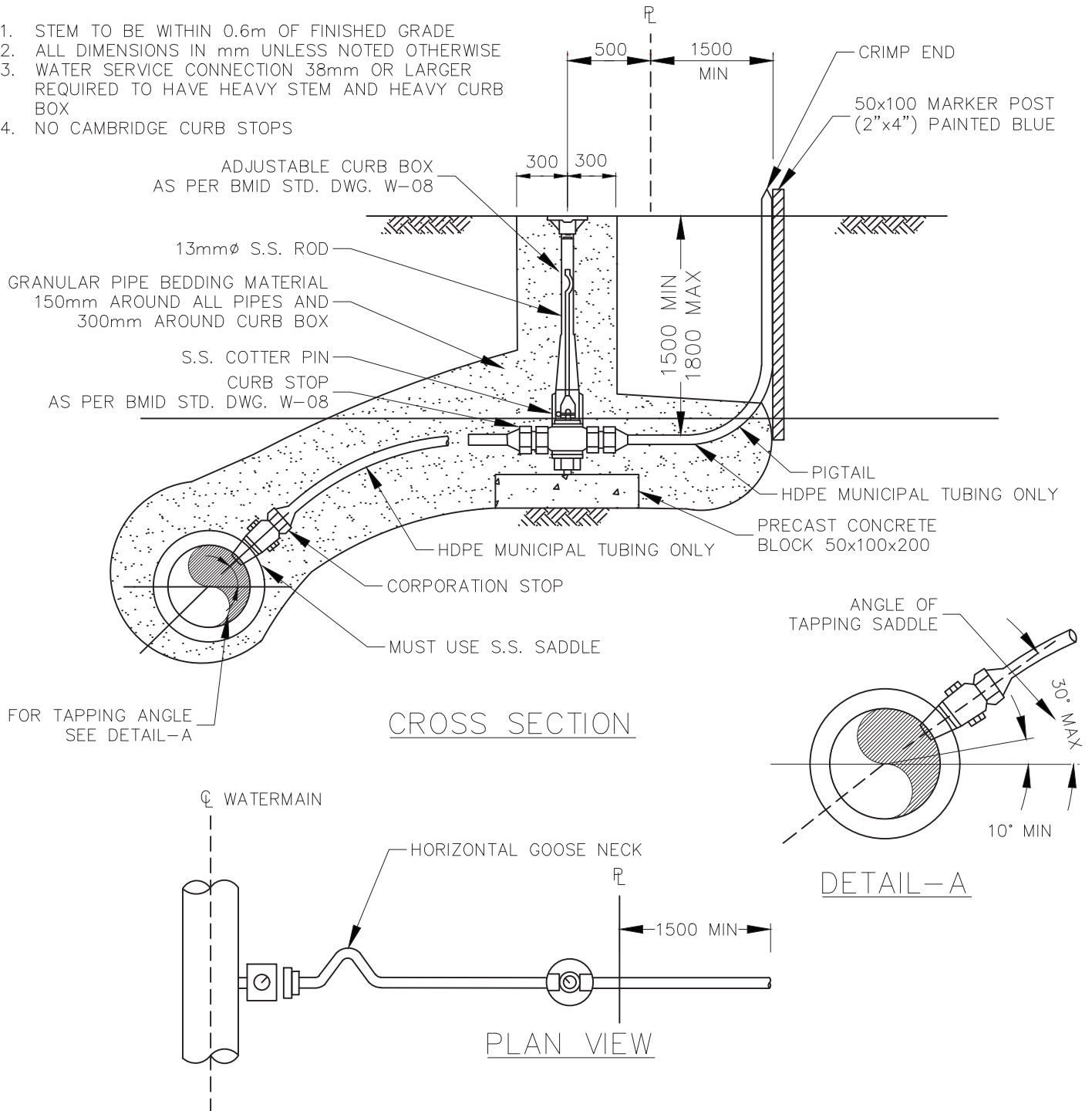
W-04



# STANDARD DETAIL DRAWINGS

## NOTES:

1. STEM TO BE WITHIN 0.6m OF FINISHED GRADE
2. ALL DIMENSIONS IN mm UNLESS NOTED OTHERWISE
3. WATER SERVICE CONNECTION 38mm OR LARGER REQUIRED TO HAVE HEAVY STEM AND HEAVY CURB BOX
4. NO CAMBRIDGE CURB STOPS



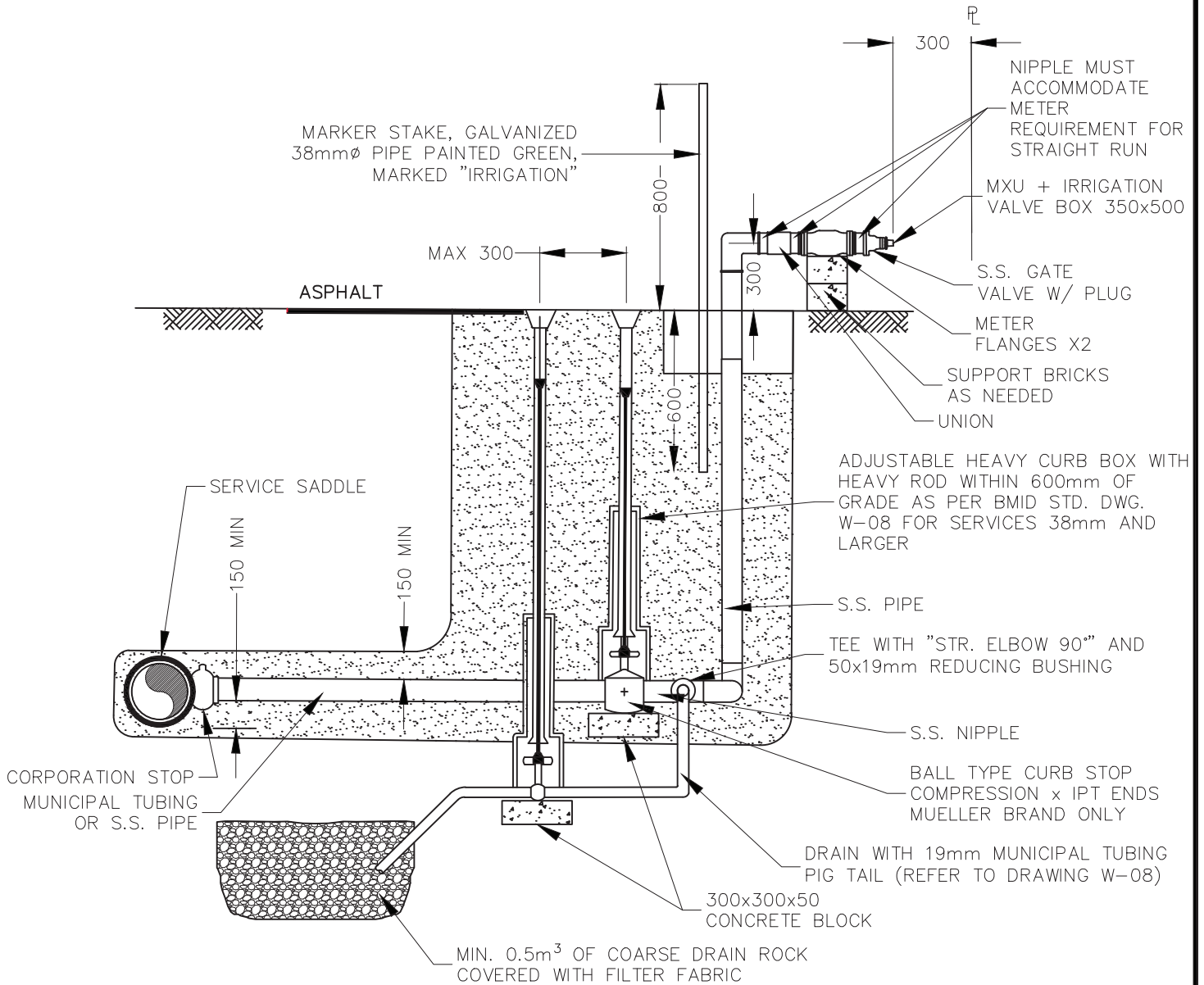
WATER SERVICE  
CONNECTION

DRAWING NUMBER

W-06



# STANDARD DETAIL DRAWINGS



## NOTES:

1. CONFIRM METER TYPE & SIZE WITH BMID
2. REFER TO BEDDING AND BACKFILL STANDARDS FOR DETAILS
3. ALL DIMENSIONS IN mm UNLESS NOTED OTHERWISE
4. ALL PIPE AFTER CURB STOP TO BE S.S.
5. NO CAMBRIDGE CURB STOPS

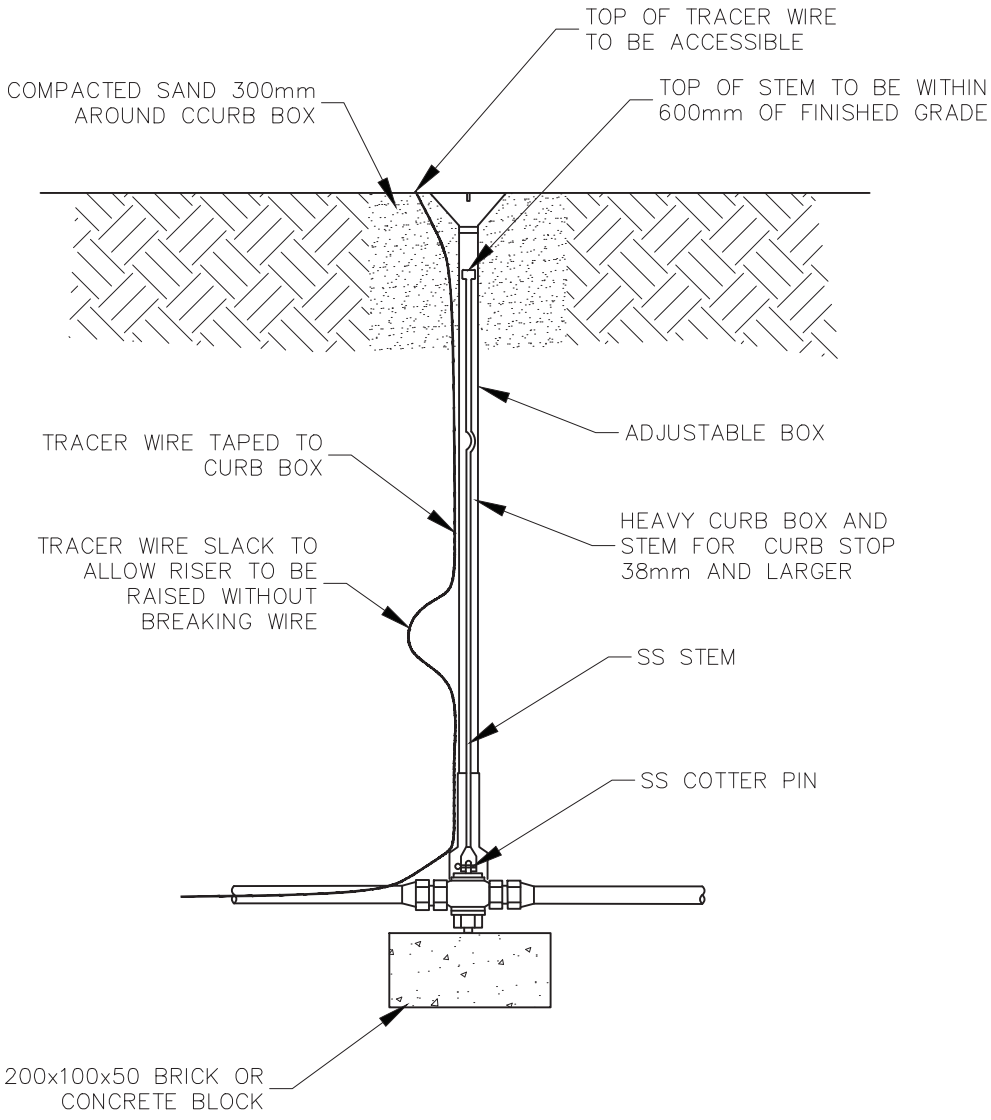


25, 38, AND 50mm  
IRRIGATION SERVICE

DRAWING NUMBER

W-07

# STANDARD DETAIL DRAWINGS



NOTES:

- 1. NO CAMBRIDGE CURB STOPS



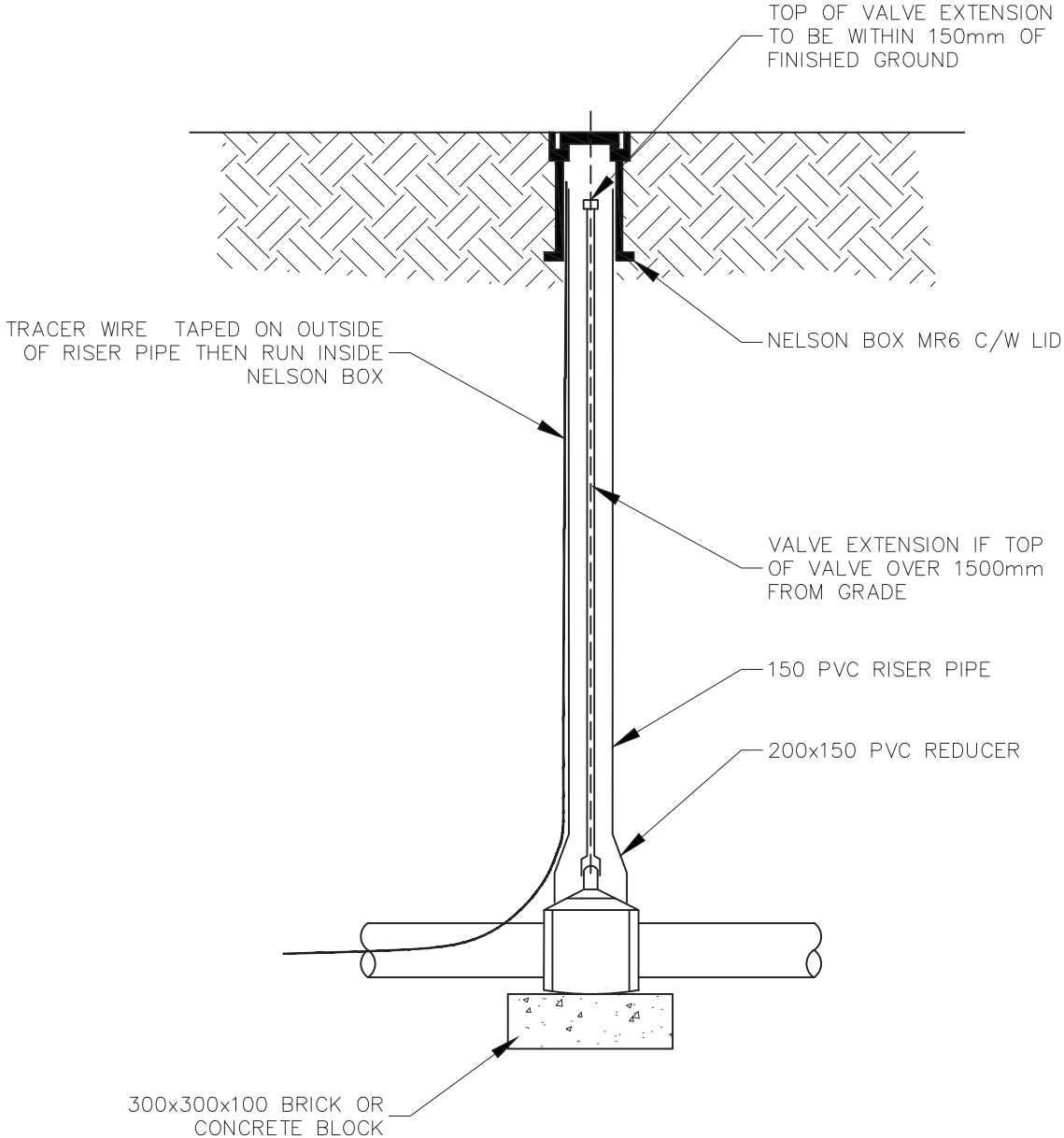
CURB STOP, CURB BOX AND STEM DETAIL

DRAWING NUMBER

W-08



# STANDARD DETAIL DRAWINGS

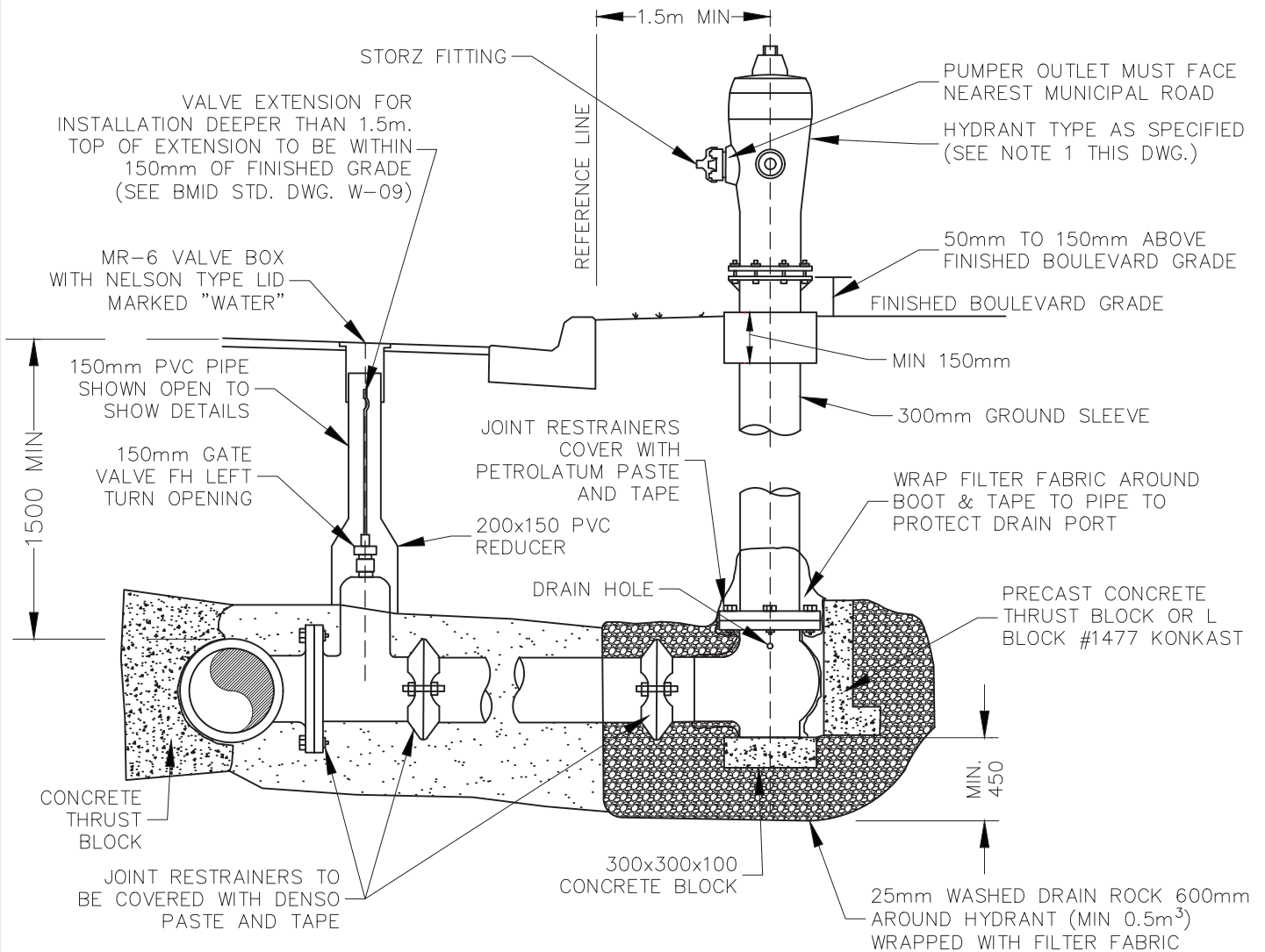


MAIN LINE VALVE

DRAWING NUMBER

W-09

# STANDARD DETAIL DRAWINGS



## NOTES:

1. HYDRANTS TO BE TC C71P OR MUELLER CANADA VALVE CENTURY ONLY
2. HYDRANTS SHALL HAVE 2 - 63.5mm OUTLETS B.C. STANDARD AND 1-100mm PUMPER OUTLET WITH STORTZ FITTING
3. ALL HYDRANTS TO HAVE 300mm $\phi$  GROUND SLEEVE (SDR 35 PVC)
4. SEE APPROVED PRODUCTS LIST FOR HYDRANT PAINT TYPE AND COLOUR CODE
5. FOR ALL BOLTS AND JOINT RESTRAINERS USE DENSO PASTE AND TAPE
6. MAINTAIN 1.0m MINIMUM CLEARANCE FROM ANY HYDRANT PROJECTION AROUND HYDRANT
7. FOR HYDRANTS NOT PROTECTED BY A CURB, SEE DETAIL CoK DRAWINGS SS-C12B - BOLLARDS
8. HYDRANT NOT TO INTRUDE INTO SIDEWALK OR PUBLIC CORRIDORS
9. VALVE OPERATING NUT TO BE WITHIN 1.5m OF FINISHED GRADE
10. ALL DIMENSIONS IN mm UNLESS NOTED OTHERWISE
11. HYDRANT TO BE FLOW TESTED AND PAINTED

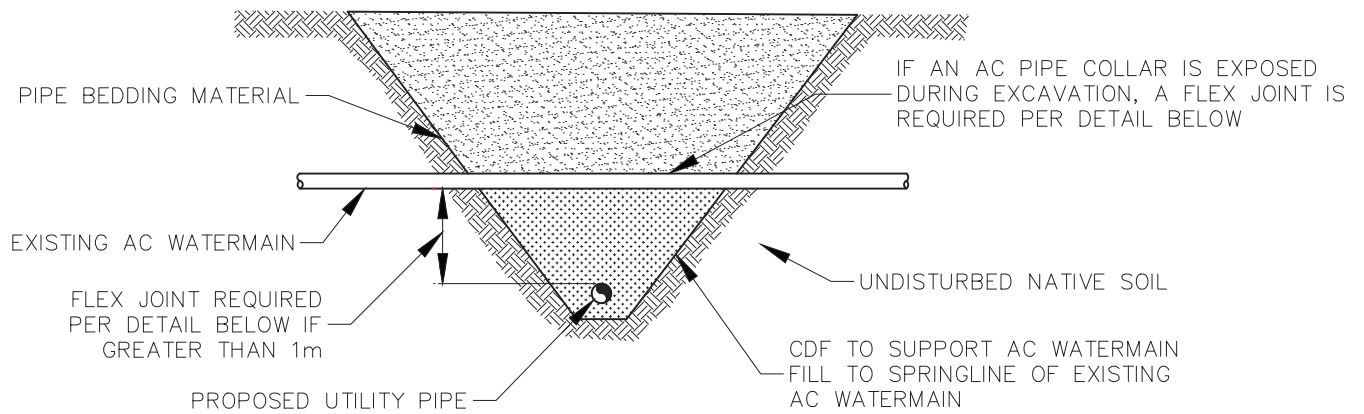


HYDRANT

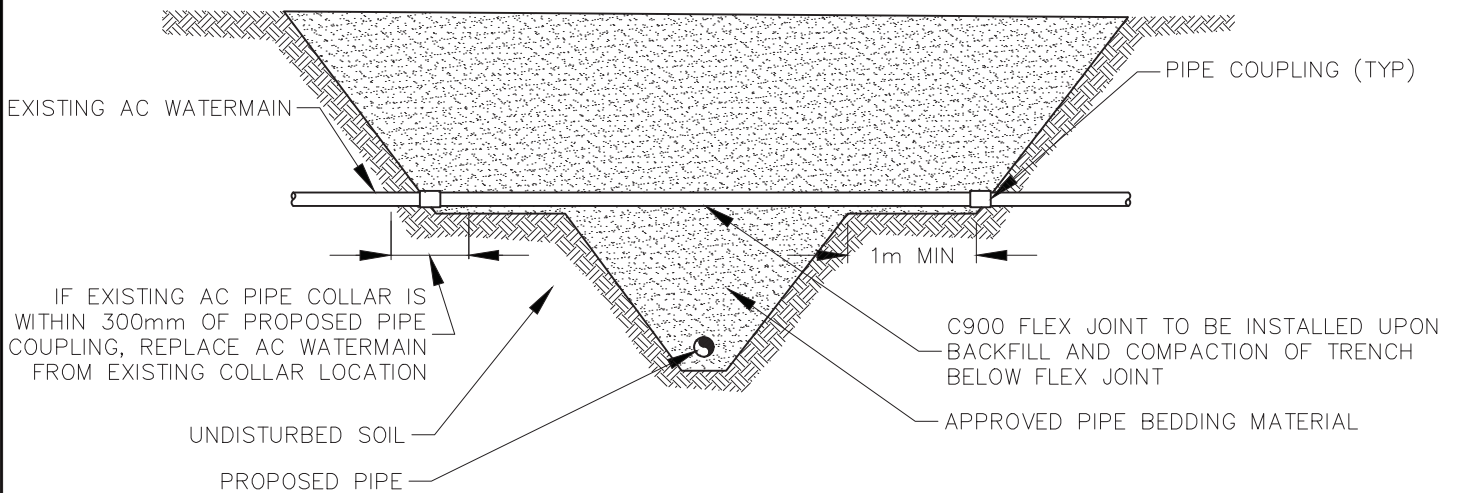
DRAWING NUMBER

W-10

# STANDARD DETAIL DRAWINGS



CDF SUPPORTED CROSSING



FLEX JOINT CROSSING

NOTES:

1. TRENCHING TO COMPLY WITH WORKSAFE REGULATIONS
2. PIPE BEDDING AND TRENCH BACKFILL TO BE PER CoK SS-G4
3. SURFACE RESTORATION TO BE AS REQUIRED PER CoK SS-G5
4. FLEX JOINT REQUIRED IF EXISTING WATERMAIN IS CLASS 100 AC
5. PROPOSED AND EXISTING MAINS WITHIN CDF TO BE WRAPPED WITH POLY
6. BASE OF CDF AREA TO BE AT LEAST TWICE THE DIAMETER OF THE SUPPORTED MAIN
7. PIPE AND COUPLINGS TO BE PER APPROVED PRODUCT LIST

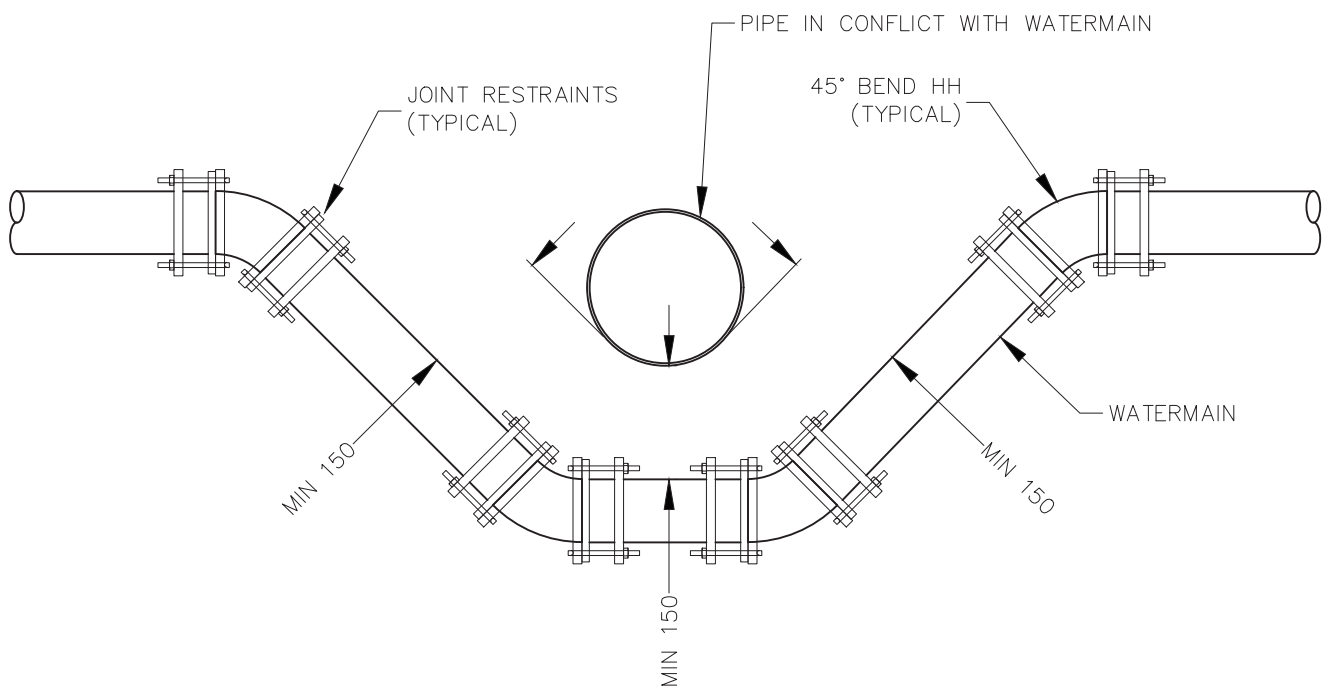


AC WATERMAIN CROSSING

DRAWING NUMBER

W-11

# STANDARD DETAIL DRAWINGS



TYPICAL SECTION

## NOTES:

1. ALL JOINTS RESTRAINERS TO BE APPROVED AS PER POLICY 266 IN THE CITY OF KELOWNA SUBDIVISION AND SERVICING BYLAW
2. ALL JOINTS TO BE RESTRAINED AS PER MMCD 02666, 2.2.13 AND THE CITY OF KELOWNA SUBDIVISION AND SERVICING BYLAW SCHEDULE 4 WATER, SECTION 1.13, AND/OR AS SPECIFIED IN THE CONTRACT DOCUMENTS OR DRAWINGS
3. ALL DIMENSIONS IN mm UNLESS NOTED OTHERWISE



U-BEND DETAIL  
(PIPE CROSSING CONFLICT)

DRAWING NUMBER

W-12