



# MONTHLY REPORTING PERIOD - DECEMBER, 2025

## SUMMARY

This document provides a summary of water quantity and quality data collected by BMID in December 2025.

### WATER SUPPLY SUMMARY

Water Source	Active / Not Active	Volume (Mega Liters)	Irrigation / Domestic	Comments
Mission Ck.	Active	242.77	Domestic/Irrig.	Primary Water supply. Domestic and irrig. demand.
Scotty Creek	Not Active	0	Irrig. only	Scotty Creek will resume operations summer 2026
Well 3 Cornish	Not Active	0	Irrig. only	Well #3 upgrade underway to provide for irrigation
Well 4	Active	1.19	Domestic	Well 4 secondary water source in north-end
Well 5	Not Active	0	Domestic/Irrig	Well #5 will resume operations summer 2026
Well 6	Not Active	0	Irrig. only	Well # 6 will resume operations summer 2026
December 2025	<b>Total:</b>	<b>243.95</b>		<b>10 Year Average for December = 234.26</b>

### WATER QUALITY SUMMARY

Raw Water Microbiological Summary		E-Coli		
Location	# of Samples	Lowest <i>E.Coli</i> Reading	Ave. <i>E.Coli</i> Reading	Highest <i>E.Coli</i> Reading
Mission Creek Intake	5	0	1.6	3
Stevens Reservoir	5	0	0.4	1
Hadden Reservoir	5	0	0.6	1
Treated Water Microbiological Summary		Turbidity Summary		
Location	Low Reading	Average Reading	High Reading	Comments
Mission Creek Raw Water	0.57 NTU	1.03 NTU	2.88 NTU	
Distribution Intake	0.42 NTU	0.46 NTU	0.70 NTU	
UV Plant	0.57 NTU	0.60 NTU	0.65 NTU	
Booster # 1 (first customer)	0.40 NTU	0.44 NTU	0.50 NTU	
UV Treatment Plant				
Plant Flow Volume	In-Spec	Off-Spec	% Off-Spec	Comments
m <sup>3</sup>	244,937 m <sup>3</sup>	0 m <sup>3</sup>	0.00%	

### WATER QUALITY DISTRIBUTION TESTING

		CARO (third party) Testing	33
BMID Population:	30,000	In House Pres./Absence	11
Required Minimum # of Tests:	30	Total Tests:	44
		Total Positive Tests:	0

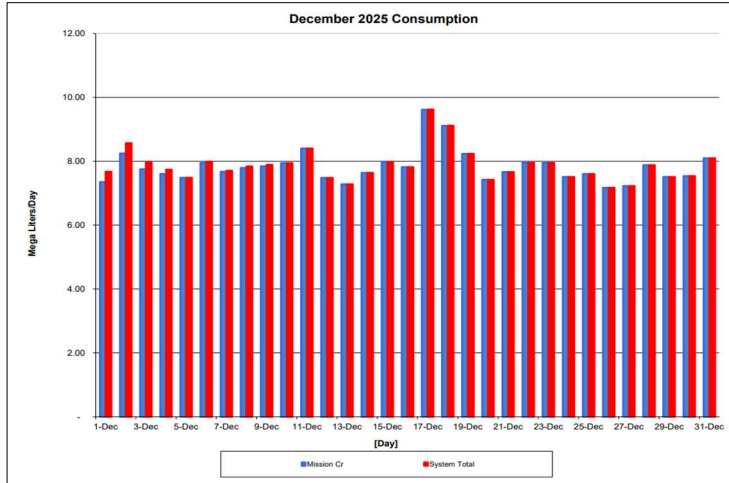
Documentation and figures are provided on the following pages to support this submission.



### 1.0 FLOWS - DECEMBER, 2025

Mission Creek provided 99.5% of the 244 Mega Liters used in the BMID system in December, with Well 4 supplying the remaining 0.5%.

**Figure 1.1 - Domestic Water System Flow**



**Table 1.2 - December 2025 - Daily Consumption Report**

Year	Mission Cr	Well #4	Well #5	System Total
2025	ML/Day	ML/Day	ML/Day	ML/Day
1-Dec	7.35	0.33	-	7.68
2-Dec	8.25	0.32	-	8.57
3-Dec	7.75	0.23	-	7.98
4-Dec	7.61	0.13	-	7.74
5-Dec	7.49	-	-	7.49
6-Dec	7.95	0.04	-	7.99
7-Dec	7.67	0.04	-	7.71
8-Dec	7.79	0.05	-	7.84
9-Dec	7.84	0.05	-	7.89
10-Dec	7.94	-	-	7.94
11-Dec	8.40	-	-	8.40
12-Dec	7.48	-	-	7.48
13-Dec	7.28	-	-	7.28
14-Dec	7.64	-	-	7.64
15-Dec	7.98	-	-	7.98
16-Dec	7.82	-	-	7.82
17-Dec	9.62	0.00	-	9.62
18-Dec	9.11	0.00	-	9.12
19-Dec	8.24	0.00	-	8.24
20-Dec	7.42	-	-	7.42
21-Dec	7.67	-	-	7.67
22-Dec	7.96	-	-	7.96
23-Dec	7.95	-	-	7.95
24-Dec	7.51	-	-	7.51
25-Dec	7.60	-	-	7.60
26-Dec	7.17	-	-	7.17
27-Dec	7.23	-	-	7.23
28-Dec	7.88	-	-	7.88
29-Dec	7.51	-	-	7.51
30-Dec	7.54	-	-	7.54
31-Dec	8.10	-	-	8.10
Totals ML	242.77	1.19	0.00	243.95
Avg's	7.83	0.04	0.00	7.87
Max	9.62	0.33	0.00	9.62
Min	7.17	0.00	0.00	7.17

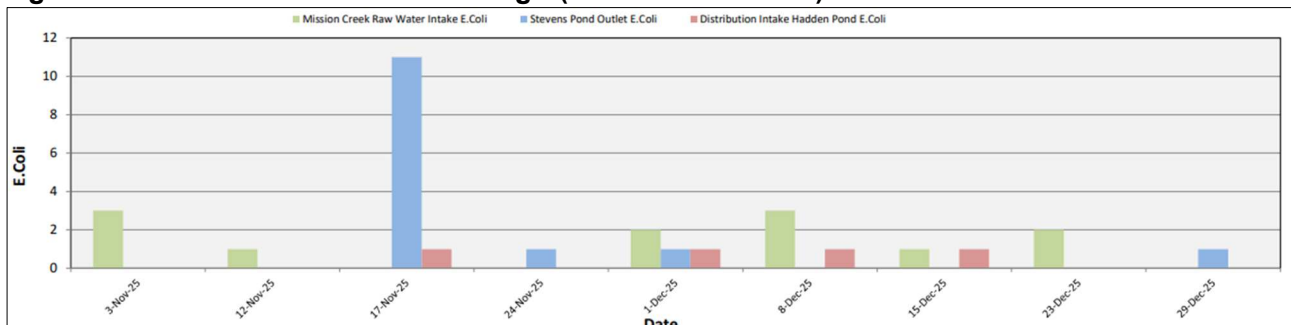


## 2.0 RAW WATER QUALITY - BACTERIOLOGICAL MONITORING

Raw water samples were taken at three points at BMID settling ponds before chlorination. Samples were taken at the Mission Creek raw water intake, the outlet for Stevens Pond, and the point of disinfection at the end of Hadden Reservoir.

Samples from the previous month are also provided to show a two-month trend

**Figure 2.1 - Raw Water *E.Coli* Readings (CARO Lab results) November 2025 - December 2025**



**Table 2.1 - *E. Coli* Readings (CARO Labs)**

Date	Mission Creek Raw Water Intake E.Coli	Stevens Pond Outlet E.Coli	Distribution Intake Hadden Pond E.Coli
3-Nov-25	3	0	0
12-Nov-25	1	0	0
17-Nov-25	0	11	1
24-Nov-25	0	1	0
1-Dec-25	2	1	1
8-Dec-25	3	0	1
15-Dec-25	1	0	1
23-Dec-25	2	0	0
29-Dec-25	0	1	0

Stevens or WTP Intake (Raw) - Sampling of raw water at intake from Mission Creek

Stevens Outlet (Raw) - Sampling point after exiting 142,000 m<sup>3</sup> 1<sup>st</sup> upper balancing reservoir (Stevens Res.)

Hadden Outlet (Raw) - Sampling point after exiting 75,000 m<sup>3</sup> 2<sup>nd</sup> lower balancing reservoir (Hadden Res.)

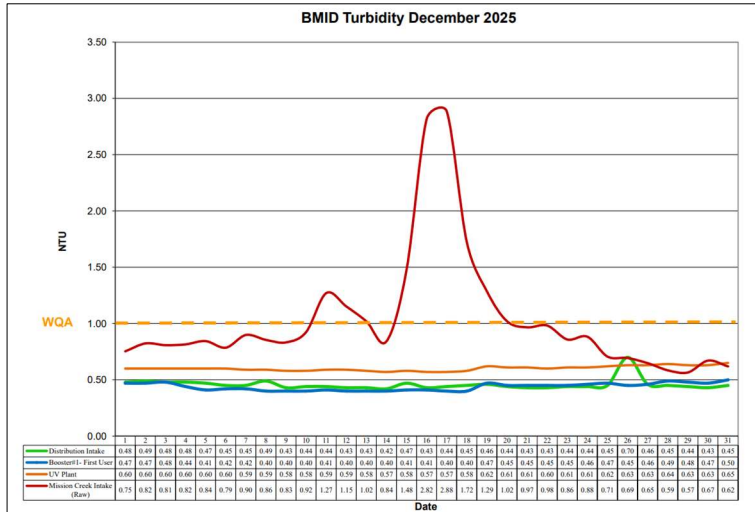
*(Hadden Outlet = Distribution Intake - Point of Disinfection)*



### 3.0 RAW AND TREATED WATER TURBIDITY

Turbidity is measured online at four locations, Mission Creek raw water intake, the Distribution Intake, the UV treatment plant, and Booster #1. The first user of the BMID system is located near Booster #1. The highest turbidity level recorded at this location was 0.50 NTU on December 31, 2025.

**Figure 3.1 – Daily Turbidity Readings  
(Mission Creek Raw - Distribution Intake – UV Plant and Booster Station #1)**



**Table 3.1 - Daily Monitoring Record – Turbidity at On-Line Turbidity Analyzers**

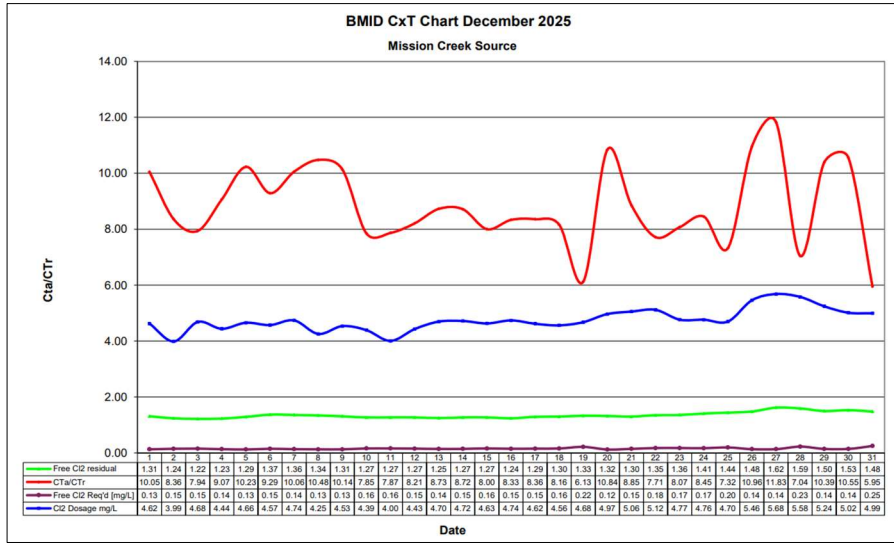
Turbidity Point Sampling for December 2025				
Date	Mission Creek Intake (Raw)	Distribution Intake	UV Plant	Booster#1- First User
	Daily Average NTU	Daily Average NTU	Daily Average NTU	Daily Average NTU
1	0.75	0.48	0.60	0.47
2	0.82	0.49	0.60	0.47
3	0.81	0.48	0.60	0.48
4	0.82	0.48	0.60	0.44
5	0.84	0.47	0.60	0.41
6	0.79	0.45	0.60	0.42
7	0.90	0.45	0.59	0.42
8	0.86	0.49	0.59	0.40
9	0.83	0.43	0.58	0.40
10	0.92	0.44	0.58	0.40
11	1.27	0.44	0.59	0.41
12	1.15	0.43	0.59	0.40
13	1.02	0.43	0.58	0.40
14	0.84	0.42	0.57	0.40
15	1.48	0.47	0.58	0.41
16	2.82	0.43	0.57	0.41
17	2.88	0.44	0.57	0.40
18	1.72	0.45	0.58	0.40
19	1.29	0.46	0.62	0.47
20	1.02	0.44	0.61	0.45
21	0.97	0.43	0.61	0.45
22	0.98	0.43	0.60	0.45
23	0.86	0.44	0.61	0.45
24	0.88	0.44	0.61	0.46
25	0.71	0.45	0.62	0.47
26	0.69	0.70	0.63	0.45
27	0.65	0.46	0.63	0.46
28	0.59	0.45	0.64	0.49
29	0.57	0.44	0.63	0.48
30	0.67	0.43	0.63	0.47
31	0.62	0.45	0.65	0.50
AVG	1.03	0.46	0.60	0.44



### 4.0 CHLORINE CONTACT TIME

Temperature, pH, peak flow and chlorine residual levels are recorded to determine the CT levels that are required to provide 3 log inactivation of *Giardia*. Chlorine Contact times exceeded the CT levels required to provide 3 log (99.9%) inactivation of *Giardia Lamblia* throughout the month of December, 2025.

Figure 4.1 - CT Trending – BMID Mission Creek Source – December 2025



CTa – CT achieved  
CTr – CT Required

The minimum CT that BMID achieved was 5.95 X that of what was required

Table 4.2 - CT Table – Mission Creek Source

BMID December 2025													
Mission Creek Source													
DATE	pH	TEMP	PEAK	Free Cl2	CT	CT	CTa/CTr	Free Cl2	Cl2	VOLUME	TIME	FLOW	Dosage
December	(Average)	(Present)	FLOW	residual	achieved	req'd		Req'd	Dosage	TOTAL	[mins]	Daily Average	Average
								[mg/L]	mg/L	Liters		L/s	KG/Day
1	7.30	6.9	134	1.31	1634.3	162.7	10.05	0.13	4.62	10029827	1248	67	27
2	7.27	6.7	153	1.24	1352.5	161.8	8.36	0.15	3.99	10029827	1091	87	30
3	7.26	6.6	159	1.22	1285.5	161.9	7.94	0.15	4.68	10029827	1054	70	28
4	7.26	6.8	142	1.23	1449.8	159.9	9.07	0.14	4.44	10029827	1179	72	28
5	7.27	6.6	129	1.29	1676.1	163.9	10.23	0.13	4.66	10029827	1299	68	27
6	7.27	6.7	150	1.37	1525.3	164.2	9.29	0.15	4.57	10029827	1113	73	29
7	7.28	6.6	136	1.36	1667.3	165.8	10.06	0.14	4.74	10029827	1226	68	28
8	7.27	6.7	131	1.34	1714.9	163.7	10.48	0.13	4.25	10029827	1280	77	28
9	7.27	6.9	134	1.31	1631.3	160.9	10.14	0.13	4.53	10029827	1245	73	29
10	7.27	6.9	169	1.27	1257.2	160.1	7.85	0.16	4.39	10029827	990	76	29
11	7.27	6.9	169	1.27	1259.8	160.1	7.87	0.16	4.00	10029827	992	88	30
12	7.28	6.9	161	1.27	1319.1	160.7	8.21	0.15	4.43	10029827	1039	71	27
13	7.28	6.8	148	1.25	1408.9	161.5	8.73	0.14	4.70	10029827	1127	65	27
14	7.28	6.7	149	1.27	1420.3	163.0	8.72	0.15	4.72	10029827	1118	68	28
15	7.29	6.9	164	1.27	1290.7	161.3	8.00	0.16	4.63	10029827	1016	73	29
16	7.30	6.8	153	1.24	1353.8	162.5	8.33	0.15	4.74	10029827	1092	69	28
17	7.31	6.8	157	1.29	1370.7	164.0	8.36	0.15	4.62	10029827	1063	72	29
18	7.33	7.0	163	1.30	1331.4	163.1	8.16	0.16	4.56	10029827	1024	70	27
19	7.31	6.8	220	1.33	1009.5	164.8	6.13	0.22	4.68	10029827	759	78	32
20	7.29	6.8	125	1.32	1771.8	163.4	10.84	0.12	4.97	10029827	1342	67	29
21	7.29	6.3	146	1.30	1493.3	168.8	8.85	0.15	5.06	10029827	1149	68	30
22	7.27	6.2	172	1.35	1308.5	169.6	7.71	0.18	5.12	10029827	969	70	31
23	7.24	6.1	173	1.36	1365.4	169.1	8.07	0.17	4.77	10029827	968	75	31
24	7.23	6.1	168	1.41	1431.4	169.4	8.45	0.17	4.76	10029827	994	71	29
25	7.23	6.3	196	1.44	1226.8	167.6	7.32	0.20	4.70	10029827	852	73	30
26	7.23	6.1	132	1.48	1869.9	170.6	10.96	0.14	5.46	10029827	1263	62	29
27	7.22	6.1	133	1.62	2038.3	172.3	11.83	0.14	5.68	10029827	1258	61	30
28	7.22	4.3	194	1.59	1371.3	194.7	7.04	0.23	5.58	10029827	862	68	33
29	7.22	4.3	125	1.50	2005.6	193.0	10.39	0.14	5.24	10029827	1337	67	30
30	7.22	4.3	125	1.53	2043.0	193.6	10.55	0.14	5.02	10029827	1335	69	30
31	7.22	4.2	214	1.48	1154.0	194.0	5.95	0.25	0.42	10029827	780	75	32
Averages	7.27	6.40	154	1.34	1496.1	167.3	8.93	0.15	4.74	10029827	1109.5	71.24	29.04

\*This calculation is based on a total volume of 10,030 m<sup>3</sup> of water to calculate contact time

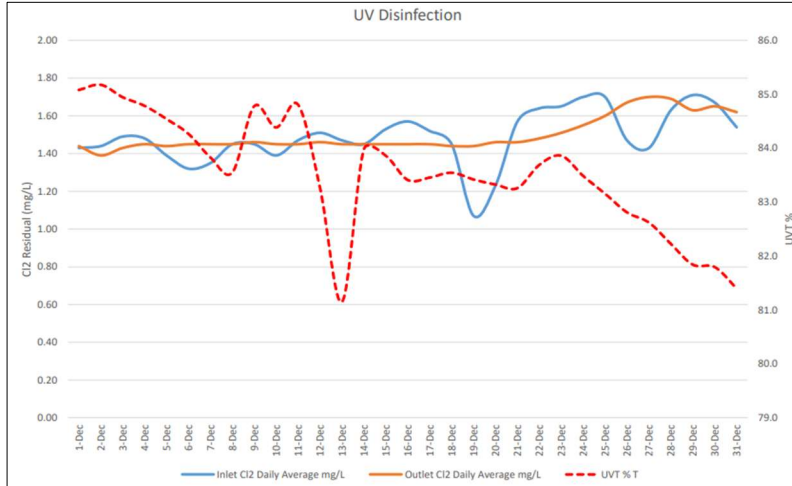


### 5.0 ULTRAVIOLET DISINFECTION

Total Water Treated: 244,937 m<sup>3</sup> 100.000%  
 On-Spec Water: 244,937 m<sup>3</sup> 100.000%  
 Off-Spec Water: 0 m<sup>3</sup> 0.000%

Average monthly chlorine residual before UV Treatment was 1.49 mg/L  
 The average monthly chlorine residual after UV treatment and re-chlorination was 1.50 mg/L.

**Figure 5.1 - UV Disinfection – BMID Mission Creek Source – December 2025**



**Table 5.2 - UV Disinfection Table – Mission Creek Source**

Date	Inlet Cl2 Daily mg/L	Outlet Cl2 Daily mg/L	UVT % T	Turbidity NTU	In Spec Water Volume Cubic Meters	Off Spec Water Cubic Meters	Off Spec % of Water Percentage
1-Dec	1.43	1.44	85.1	0.60	7,351	0	0.00%
2-Dec	1.44	1.39	85.2	0.60	8,248	0	0.00%
3-Dec	1.49	1.43	84.9	0.60	7,754	0	0.00%
4-Dec	1.48	1.45	84.8	0.60	7,608	0	0.00%
5-Dec	1.39	1.44	84.5	0.60	7,486	0	0.00%
6-Dec	1.32	1.45	84.3	0.60	7,951	0	0.00%
7-Dec	1.35	1.45	83.8	0.59	7,673	0	0.00%
8-Dec	1.45	1.45	83.6	0.59	7,794	0	0.00%
9-Dec	1.45	1.46	84.8	0.58	7,844	0	0.00%
10-Dec	1.39	1.45	84.4	0.58	7,942	0	0.00%
11-Dec	1.47	1.45	84.8	0.59	8,404	0	0.00%
12-Dec	1.51	1.46	83.3	0.59	7,482	0	0.00%
13-Dec	1.47	1.45	81.2	0.58	7,283	0	0.00%
14-Dec	1.45	1.45	84.0	0.57	7,638	0	0.00%
15-Dec	1.53	1.45	83.9	0.58	7,978	0	0.00%
16-Dec	1.57	1.45	83.4	0.57	7,820	0	0.00%
17-Dec	1.52	1.45	83.5	0.57	11,787	0	0.00%
18-Dec	1.45	1.44	83.5	0.58	9,114	0	0.00%
19-Dec	1.07	1.44	83.4	0.62	8,236	0	0.00%
20-Dec	1.23	1.46	83.3	0.61	7,423	0	0.00%
21-Dec	1.57	1.46	83.3	0.61	7,667	0	0.00%
22-Dec	1.64	1.48	83.7	0.60	7,959	0	0.00%
23-Dec	1.65	1.51	83.9	0.61	7,954	0	0.00%
24-Dec	1.70	1.55	83.5	0.61	7,513	0	0.00%
25-Dec	1.70	1.60	83.2	0.62	7,605	0	0.00%
26-Dec	1.47	1.67	82.8	0.63	7,173	0	0.00%
27-Dec	1.43	1.70	82.6	0.63	7,226	0	0.00%
28-Dec	1.63	1.69	82.2	0.64	7,882	0	0.00%
29-Dec	1.71	1.63	81.8	0.63	7,512	0	0.00%
30-Dec	1.67	1.65	81.8	0.63	7,536	0	0.00%
31-Dec	1.54	1.62	81.4	0.65	8,098	0	0.00%
<b>Average</b>	<b>1.49</b>	<b>1.50</b>	<b>83.54</b>		<b>Total 244,937</b>	<b>0</b>	<b>0.000%</b>

